

# 2026 Richland County Beef Education Points Report

*Exhibitors must earn a total of 4 points to be eligible to sell an animal at the Meat Animal Sale.  
Points Requirement Report must be turned in to the Extension Office by July 15<sup>th</sup> at 4:30 p.m.*

Name \_\_\_\_\_ Parents \_\_\_\_\_

Address \_\_\_\_\_ Phone \_\_\_\_\_

Email \_\_\_\_\_ Club/Chapter/Organization \_\_\_\_\_

## Beef Producers Educational Meetings (2 points per meeting)

Name of Event	Date (s)	Location	Signature of person conducting the event

## Other Educational Meetings/Events (1-2 points per event-i.e. Carcass Program, Judging Team, etc. See list on back)

Name of Event	Date	Location	Signature of person conducting the event

## Online Educational Programs (Programs less than two hours=1 point. Programs two hours or more =2 points.)

Title of Online Program	Date	Length of Program	
			Attach Online Education Verification Form
			Attach Online Education Verification Form

## Quality Assurance Programs (2 points per program. The completion certificate must be attached.)

Name of Program	Date	Delivery Method	Signature of Instructor or Attach Certificate
YQCA		Online or In Person	
BQA		Online or In Person	

## Real Life Learning (1-4 hours=1pt. Max. 2 pts. Must be non-paid labor and a producer you would not normally work with)

Producer/ Supervisor	Date(s)	Hours	Signature of Producer/ Vet /Supervisor

**Beef Wagon** (3 hours equals 2 points. Maximum 2 pts.) First 2 hours are required to be eligible for the sale. Additional hours will count towards points.

**\*\*\* New in 2025 all sellers are required to work 2 hours in the Beef Wagon \*\*\***

Name of Supervisor	Date(s)	Hours	Signature of Supervisor

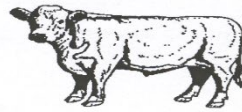
## Breeding Stock (1 point for showing beef breeding stock in 2025)

I, \_\_\_\_\_, certify that \_\_\_\_\_,  
exhibited breeding stock at the 2025 Richland County Fair.

I certify that I have attended the above meetings or events:

Exhibitor Signature \_\_\_\_\_ Parent Signature \_\_\_\_\_

## **RICHLAND COUNTY BEEF PRODUCERS**



### **2026 Meat Animal Sale—Educational Points Requirement:**

Richland County Beef Producers have a point system requirement to sell in the Richland County Meat Animal Sale. The time frame to meet the point requirements will be from **July 16, 2025 to July 15, 2026**.

To qualify, programs must have an educational value and focus on Beef production /showing. **To be eligible to sell an animal at the Meat Animal Sale, participants must accumulate 4 points.**

**BEEF PRODUCERS SPONSORED EDUCATIONAL MEETINGS:** These meetings are focused on education regarding the Beef industry. Examples are the Beef Producer Annual Meeting or Beef Producers Annual Field Day. These meetings are **worth 2 pts.**

**OTHER EDUCATIONAL EVENTS/MEETINGS:** Youth can also participate in other events/meetings focused on education regarding the beef industry. These events are worth 1 pt. each. Multiday events are worth 2 pts. Events with multiple speakers and longer than 2 hours **may** qualify for 2 points, however, contact Extension office prior to the event for point determination. Examples of events are: Richland County Carcass Program, Skill-a-thon events, Show camps, Beef pasture walks, Co-op meetings, Judging teams, etc. Participation on judging a team is worth 1 pt. Exhibiting beef at any show other than the Richland County Fair is worth 1pt.

**ONLINE EDUCATIONAL PROGRAMS:** Youth can participate in online programs focused on education to learn more about the beef industry. Several programs are available on the Wisconsin Youth Livestock website: <https://livestock.extension.wisc.edu/programs/wisconsin-youth-livestock/> and the Division of Extension-Farm Ready Research Webinar series: <https://extension.wisc.edu/agriculture/farm-ready-research/> Attach a completed Online Education Verification Form. **Programs less than two hours = 1 point; Two or more hours = 2 points.**

**QUALITY ASSURANCE PROGRAMS:** Youth completing the Beef Quality Assurance (BQA) <https://www.bqa.org/bqa-certification> or Youth for the Quality Care of Animals (YQCA) <https://yqcaprogram.org/> earn **2 points**. Attach completion certificate.

**REAL LIFE LEARNING:** Points can be earned by one-on-one education with a producer or beef industry professional. These cannot be part of a regular routine or a paid job. Working with a vet on your family farm may be used for education points if the Education Points Report is signed by the vet. **1-4 hours = 1 point. Maximum of 2 points.**

**BEEF WAGON:** Points are earned by working in the beef wagon at various Beef Producer events. There will be **2 points awarded for every 3 hours** worked. **Maximum of 2 points.** First two hours are required to be eligible for the sale. Additional hours will count towards points.

**\*\*\* New in 2025 all youth selling beef must work 2 hours in the Beef Wagon \*\*\***

**BREEDING STOCK:** Showing breeding stock at the 2025 Richland County Fair is worth **1 point**. Report must be signed by a Beef Producers Board member, Beef Superintendent, or Extension Educator.

Questions? Contact Karleen Craddock, 4-H Extension Educator at [karleen.craddock@wisc.edu](mailto:karleen.craddock@wisc.edu).