

2025 Richland County Beef Education Points Report

*Exhibitors must earn a total of 4 points to be eligible to sell an animal at the Meat Animal Sale.
Points Requirement Report must be turned in to the Extension Office by July 15th at 4:30 p.m.*

Name _____ Parents _____

Address _____ Phone _____

Email _____ Club/Chapter/Organization _____

Beef Producers Educational Meetings (2 points per meeting)

Name of Event	Date (s)	Location	Signature of person conducting the event

Other Educational Meetings/Events (1-2 points per event-i.e. Carcass Program, Judging Team, etc. See list on back)

Name of Event	Date	Location	Signature of person conducting the event

Online Educational Programs (Programs less than two hours=1 point. Programs two hours or more =2 points.)

Title of Online Program	Date	Length of Program	
			<i>Attach Online Education Verification Form</i>
			<i>Attach Online Education Verification Form</i>

Quality Assurance Programs (2 points per program. The completion certificate must be attached.)

Name of Program	Date	Delivery Method	Signature of Instructor or Attach Certificate
YQCA		<i>Online or In Person</i>	
BQA		<i>Online or In Person</i>	

Real Life Learning (1-4 hours=1pt. Max. 2 pts. Must be non-paid labor and a producer you would not normally work with)

Producer/ Supervisor	Date(s)	Hours	Signature of Producer/ Vet /Supervisor

Beef Wagon (3 hours equals 2 points. Maximum 2 pts.)

***** New in 2025 all sellers are required to work 2 hours in the Beef Wagon *****

Name of Supervisor	Date(s)	Hours	Signature of Supervisor

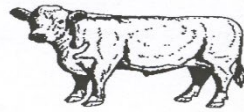
Breeding Stock (1 point for showing beef breeding stock in 2024)

I, _____, certify that _____, exhibited breeding stock at the 2024 Richland County Fair.

I certify that I have attended the above meetings or events:

Exhibitor Signature _____ Parent Signature _____

RICHLAND COUNTY BEEF PRODUCERS



2025 Meat Animal Sale—Educational Points Requirement:

Richland County Beef Producers have a point system requirement to sell in the Richland County Meat Animal Sale. The time frame to meet the point requirements will be from **July 16, 2024 to July 15, 2025**.

To qualify, programs must have an educational value and focus on Beef production /showing. **To be eligible to sell an animal at the Meat Animal Sale, participants must accumulate 4 points.**

BEEF PRODUCERS SPONSORED EDUCATIONAL MEETINGS: These meetings are focused on education regarding the Beef industry. Examples are the Beef Producer Annual Meeting or Beef Producers Annual Field Day. These meetings are **worth 2 pts.**

OTHER EDUCATIONAL EVENTS/MEETINGS: Youth can also participate in other events/meetings focused on education regarding the beef industry. These events are worth 1 pt. each. Multiday events are worth 2 pts. Events with multiple speakers and longer than 2 hours **may** qualify for 2 points, however, contact Extension office prior to the event for point determination. Examples of events are: Richland County Carcass Program, Skill-a-thon events, Show camps, Beef pasture walks, Co-op meetings, Judging teams, etc. Participation on judging a team is worth 1 pt. Exhibiting beef at any show other than the Richland County Fair is worth 1pt.

ONLINE EDUCATIONAL PROGRAMS: Youth can participate in online programs focused on education to learn more about the beef industry. Several programs are available on the Wisconsin Youth Livestock website: <https://livestock.extension.wisc.edu/programs/wisconsin-youth-livestock/> and the Division of Extension-Farm Ready Research Webinar series: <https://extension.wisc.edu/agriculture/farm-ready-research/> Attach a completed Online Education Verification Form. **Programs less than two hours = 1 point; Two or more hours = 2 points.**

QUALITY ASSURANCE PROGRAMS: Youth completing the Beef Quality Assurance (BQA) <https://www.bqa.org/bqa-certification> or Youth for the Quality Care of Animals (YQCA) <https://yqcaprogram.org/> earn **2 points**. Attach completion certificate.

REAL LIFE LEARNING: Points can be earned by one-on-one education with a producer or beef industry professional. These cannot be part of a regular routine or a paid job. Working with a vet on your family farm may be used for education points if the Education Points Report is signed by the vet. **1-4 hours = 1 point. Maximum of 2 points.**

BEEF WAGON: Points are earned by working in the beef wagon at various Beef Producer events. There will be **2 points awarded for every 3 hours worked. Maximum of 2 points.**
***** New in 2025 all youth selling beef must work 2 hours in the Beef Wagon *****

BREEDING STOCK: Showing breeding stock at the 2024 Richland County Fair is worth **1 point**. Report must be signed by a Beef Producers Board member, Beef Superintendent, or Extension Educator.

Questions? Contact Karleen Craddock, 4-H Extension Educator at karleen.craddock@wisc.edu.