



HOMEMAKER HERALD

Spring 2020



Calendar of Events

February

- 2 Groundhog Day - shadow? No shadow?
- 4 HCE Executive Board Meeting,
10 a.m., Room 713, East Hall, UW-PR
- 12 Lincoln's Birthday Day
- 14 Valentine's Day
- 17 President's & Washington's Birthday
- 25 Mardi Gras!
- 26 Ash Wednesday



March

- 3 HCE Executive Board Meeting,
10 a.m., Room 713, East Hall, UW-PR
- 8 Daylight Savings Time—Spring Ahead 1 hour!
- 17 St Patrick's Day
- 20 Spring Begins
- 28 Master Gardner Expo, UW-PR, Wallace Student Ctr



April

- 1 April Fool's Day
- 5 Palm Sunday
- 7 HCE Executive Board Meeting,
10 a.m., Room 713, East Hall, UW-PR
- 12 Easter
- 13 Thomas Jefferson's Birthday
- 15 SW District Spring Meeting, Yuba Community Ctr.
- 22 Earth Day

Inside this Issue

HCE President's Letter	2
Family Living Agent Letter	2
Executive Board Minutes	3 - 4
Christmas Meeting Photos	5
Passages bags Assembly Photos	5
Spring Fling Invitation	6
Garden Expo Invitation	6
Prescription Bottle Project Information	7
A Husband's Viewpoint	7
Cultural Arts Preview	7
SW District Meeting Invitation	8 - 9



Daylights Savings Time March 8, 2020



REMEMBER TO CHANGE YOUR CLOCK
Spring Ahead 1 hour.



Hello Everyone,

This past year has gone by fast but we seem to get more accomplished every year.

All year long our members stay busy making quiltlets to give to our local Police and give out to children who have been traumatized in car accidents.

This year we put together 40 bags of personal items to give to the women's shelters and crocheted or knitted hats, scarves, and mittens for the shelter.

We continue to donate knitted and crocheted newborn baby caps to our local hospital.

Our popular mitten program continues, where we cut and sew mittens for schools for students who have lost or have no mittens.

Every year at the Cesky Den Celebration, we have kids come to our HCE table and decorate vests and then wear them for the celebration.

We love doing crafts with our nursing home residents.

We volunteer to help with Cancer Walks and funeral dinners.

Our membership has risen in 2019 in 2 of our clubs.

In November, we get together and make large food baskets and give them to shut-ins due to illness. They are so appreciative, it is like playing Santa and is very rewarding to see their eyes light up when they see their basket of goodies.

We volunteer to help with a program called "Get Real!" to help high school students learn about check books, speeding tickets, college degrees. It's like a high school "game of LIFE".

Our reading Grandparents program is growing. We read to two schools once a month and donate the books we read to the class. One of our reading grandparents received a letter from a child she read to. The child said thank you for reading to them because instead you could be out gambling or out on a 'yot'. Out of the mouths of babes!

We started a Youth Cultural Arts show and it was a huge success, so we are planning on doing it again this year. We had some unbelievable talent and some remarkable youth projects.

We will be hosting the April 15 South West District meeting this year and you will have an amazing, fun time you won't forget.

We will have a table at the Master Gardeners show, where we sell crafts, garden items, and all proceeds to into a scholarship fund for our youth.

Our members go above and beyond to help their communities and I am so proud to serve them as their Richland County President.

Your Richland County HCE President
Yvonne Chapman



Hello!

I am sure all of you are looking forward to Spring, as I am!

My January-March is always a busy season of Extension programs, and this year was no different. I continue to offer the *Raising a Thinking Child* class to parents of young children at the Ithaca and Richland School districts, and added River Valley this year.

I also am working with community coalitions dedicated to the promotion of family wellbeing and health. These include mental health, substance abuse prevention, and promoting nutrition and physical activity through Richland FIT.

There are many events coming up, which promise to be good chances to connect and see one another, too.

Get Real gathers approximately 250 high school students to learn "1st hand" what it takes to manage money as a young adult. Thank you to everyone who helps volunteer to make it a reality.

I look forward to seeing many of you there, and at the upcoming HCE Spring Fling and Southwest District meetings. There are interesting programs planned for both events to be held in Yuba.

See you soon!

Richland County Family Living Agent

Chelsea Wunnicke



Happy Spring



HCE Executive Board Meeting December 10, 2019

Present: President, Yvonne Chapman, Charlotte Page, Kathy Fanta, Cecile Haugh, Jennie Silver, Diane Dalberg, Ann Cunningham, and Eileen Eberle.

“Oh, Come all ye faithful” was the theme of our Richland County HCE December Executive Board gathering at the “Cream Pitcher” Bed and Breakfast, home of Diane Dalberg, the cultural arts chairman of the board on Tuesday, December 10th at 11:00 a.m.

We were welcomed by hundreds of cream pitchers, lots of ornamental trees, relics of days gone by, and a real wood fireplace. The table was set with lovely homemade potholders as gifts for each board member made by Diane Dalberg, stemmed glasses with bows, napkins holders of pine trees, and bowls, plates, etc. All so very welcoming.

We were asked to bring a food such as chopped onions, shredded coconut, chopped tomatoes and green peppers, cherries, and other things to combine into our meal. Diane had prepared rice and chicken and we added our likes from a wide variety of items, all labeled, and dressings to make our own individual entrees. Following a prayer of thanks for all of our blessings, we ate and had a great social time. This was followed by coffee and desserts prepared by Diane and Cecile. What a glorious time.

Our hostess took us to a room where she had an activity for us to do. We each got a clear glass plate, fabric of our choice, and with glue and mod-podge, made a wonderful decorated plate. They turned out beautiful.

Diane had a Holiday bingo game for us to play and we had candy kisses for the pieces on the cards. The prizes were the exchange gifts each had brought to the gathering. Fun was had by all in this game.

There was an exchange of cards and gifts from members including candy mice made by Kathy Fanta, scrubbies from Eileen Eberle, hand painted picture of Murphy (a dog) by Cecile Haugh, and other holiday items. Kathy took many pictures, and the ambiance was superb.

The board did plan out the program book for 2020 and it will be ready at the January meeting. Dates were set for meetings in the coming year.

At about 4:00 p.m., we departed and went on our way home and with sweet memories of a beautiful H.C.E. day. Thank you so much, Diane, for this glorious time. All proud to be H.C.E. members.

Sincerely submitted by
Secretary Eileen Eberle

HCE Executive Board Meeting January 7, 2020

Present included: Yvonne Chapman, Kathy Fanta, FLA Chelsea Wunnicke, Cecile Haugh, Diane Dalberg, Charlotte Page, and Eileen Eberle.

The Richland County HCE Executive Board met Tuesday January 7, 2020, East Hall, UW-Platteville Richland at 10:00 a.m. for the January Board meeting. The meeting was called to order by

President, Yvonne Chapman.

The U.S. Flag Pledge and Homemaker's Creed were recited. Roll call taken. Pennies for Friendship were collected. The December minutes were read by Secretary Eileen Eberle. Motion to approve was made by Cecile Haugh, 2nd, and carried. The treasurer's report was presented by Cecile Haugh and approved as given, and filed. Cecile also presented the audit sheet for 2019 and a projected budget for 2020. Both were excellent reports.

The February 2020 meeting will be February 4, 2020, East Hall, UW-Platteville Richland at 10:00 a.m.

The Reading Grandparent's Program is continuing at the Richland and Riverdale School districts. Any members who want to be readers, please call Eileen at 583-5544. This is along with Delta Kappa Gamma.

Members gave updates of their club activities. Much being done for our communities. The Yuba Club is giving mittens for area schools. County Liners made baby blankets for the Richland Hospital. Five Points Club made many of the bags for Passages. Others doing good deeds.

Richland County HCE members put together gift bags for Passages for battered women and the homeless. Yvonne delivered these to the home, 39 bags made. We also contributed sets of mittens, hats, and gloves to Passages. We need more quiltlets for Nicaragua and the area police departments. These are 1½ yard by 1½ yard pieces of fabric.

The membership enrollment cards were distributed to the clubs for 2020. Cost to belong to HCE for a year is \$10.00, with \$1.00 remaining in the club treasury. The Program Books for 2020 were put together after the dates for 2020 were confirmed and other information set.

The Family Living Agent for Richland County is busy with programs including P.O.O.L. programs available at the office. Also, she is doing some very good farmer programs in January, February, and March. The farmers are facing hard times with the world trade programs and need to know of help that is available.

Chelsea is working on the “Get Real” Program for March 18, 2020 and programs on Financial help, plus canning programs.

We will participate in the Garden Expo at the UW-Platteville Richland, March 28th. Plants and bulbs are needed for this activity. Let any board member know if you have some available. This raises funds for scholarships. Eileen is donating a lawn ornament for a raffle, plus others are donating items.

Richland County hopes to put up a county display at the 2020 State Conference as we are doing some great activities in our communities. Please save pictures and news items of your activities and get these to Cecile Haugh. This conference is September 21-23 in St. Croix County.

Shirley Steinhorst of Baraboo is our Southwest district director for Wisconsin HCE and she will be at the Southwest District in Yuba, April 15th. We will be having an apron show at this meeting and will need our members to model aprons. We will be doing a craft of making flowers.

Clubs are to get their financial sheets for 2019 to Cecile so she has them for the state reports.



The initiation of the officers was delayed due to the absence of several board members.

May 2nd is Spring Fling in Yuba. The program is being put together for a speaker and a craft class. Also there will be a fund raiser of items to bid on.

Following the Homemaker's Prayer, there was a motion to adjourn at 11:30 a.m. and President Yvonne Chapman adjourned the meeting. We spent the rest of the time filling the sacks for Passages and the homeless.

Sincerely submitted by
Secretary Eileen Eberle



HCE Executive Board Meeting February 4, 2020

Present included: President Yvonne Chapman, Chelsea Wunnicke, FLA, Kathy Fanta, Diane Dalberg, and Eileen Eberle.

The Richland County H.C.E. Executive Board met Tuesday February 4, 2020 at East Hall, UW-Platteville Richland at 10:00 a.m. with the meeting called to order by President, Yvonne Chapman.

The U.S. Flag Pledge and Homemaker's Creed were recited. Roll call taken. Pennies for Friendship were collected. The January 7th minutes were read by Eileen, motion to accept as read by Yvonne, 2nd, and carried. The treasurer's report was presented by Yvonne, approved as given, and filed.

The 2020 membership was updated and some still need to get their sheets turned into the office.

Richland County H.C.E. will have a flower/bulb/seeds table at the Master Gardener Show, Saturday, March 28th at the UW Campus. Any member having plants/bulbs/seeds to donate, please notify Cecile at 608-489-2587. We will be selling chances on some garden supplies or other donations. We will sell bird feeders, garden markers, bulbs, plants, etc. Chelsea sent in the entry. This raises funds for a scholarship.

The H.C.E. Southwest District Spring meeting will be Wednesday, April 15th at Yuba with Richland County hosting. We will have an apron show and if any homemaker has an apron they want to wear in the show, please let us know. We will need Richland members of HCE to model aprons. The registration sheet will be in this Herald. Please sign up for this. We are doing a craft, having a speaker, district meeting in afternoon. Door prizes of 8 centerpieces of wreaths and 3 aprons. A fun day.

The Richland H.C.E. Spring Fling will be on Saturday, May 2nd at the Yuba Community Center. There will be a speaker, a craft to make, items to bid on for scholarships, and a Scholarship winner will be announced, etc. It will be potluck. If you have any donations for the bidding for scholarships, please bring with you.

Empty prescription bottles are being collected for a project in Ohio. Information in the Herald. Yvonne is working with some organizations to get some books for our reading program.

The Reading Grandparent's Program is continuing at the Richland and Riverdale School districts. Any members who want to be readers, please call Eileen at 583-5544. This is along with Delta Kappa Gamma.

Our FLA, Chelsea Wunnicke, spoke on her planned activities in the county. She will be at the Garden Show with information on canning, preserving, and more. She is presenting meetings on Farmer's Concerns in her activities.

The Cultural Arts Show for Richland County H.C.E. will be July 7th at Schmitt Woodland Hills. Entry forms will be in the Herald. Also new will be the entries for youth. Please get the word out on this so we have entries for judging. New last year in Richland County. This includes a potluck dinner.

Fund raisers were discussed. Yvonne gave many ideas for fund raisers and several are looking into times and places.

Richland County H.C.E. is interested in being a part of the Early Readers grant program in Wisconsin. Trying for funds.

The "Get Real" Program with the area high school students is Wednesday, March 18th. Please sign up to work at this great program where youth learn of real life experiences in economy and financing. This is at the Richland Center High School.

The Richland County H.C.E. scholarship information is available at the Extension Office. A motion was made and 2nd to keep the same committee and judges from the past year of Kathy Fanta and Charlotte Page. The amount this year is \$300.00.

The next meeting of the executive board of H.C.E. is Tuesday, March 3rd.

The H.C.E. State Conference is September 21-23 in Hudson, WI. Some will be going and participate in state activities.

The officers discussed activities in areas including: making cancer pillows, saving pill bottles, saving ink cartridges, milk bottle caps, and more.

Officers for the coming year include: Yvonne Chapman, President; Eileen Eberle, Secretary; _____, Treasurer; Diane Dalberg, Cultural Arts/Textile Arts Chairman; Ann Cunningham, Membership; Kathy Fanta and Charlotte Page International Chairmen; Cecile Haugh Community Outreach Chairman; plus the Club representatives listed in the program books.

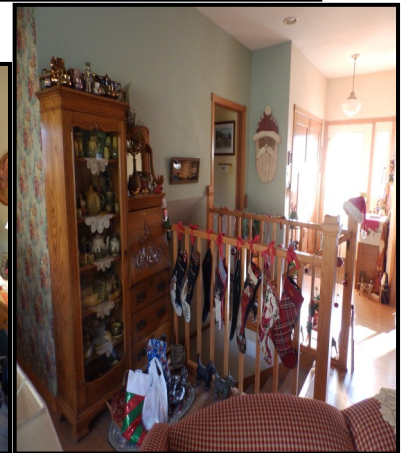
We are continuing to collect materials for bags for Passages. If you have items to include, please get to an officer or bring to the extension office. We put together 39 bags for Passages and the Homeless in January.

Motion to adjourn was made by President, Yvonne Chapman to adjourn the meeting at 11:55 a.m. and the meeting was adjourned.

Sincerely submitted by
Secretary Eileen Eberle



Executive Board Christmas Meeting 2019

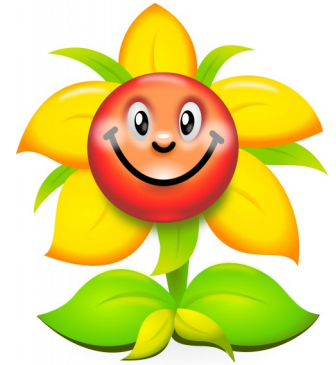


Personal Bags Assembly 2020!



Richland County HCE Spring Fling

Saturday, May 2, 2020
Yuba Community Center
Yuba, WI



- * Crafts
- * Speakers
- * Silent Auction
- * Member service awards
- * Scholarship Winner Announced

Be sure to bring your centerpiece to enter for the Cultural Arts Show!

Bring a salad or dessert
(Meat will be provided)

Join us for a wonderful time!

2020 Master Gardener Expo

March 28, 2020

9 am - 4 pm

Tickets: \$10 advance purchase
(price will increase at the door)
Includes lunch!

"We Need Your Plants"

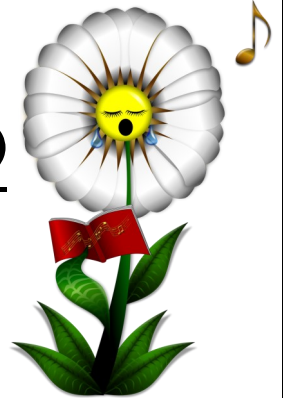
The Richland County HCE will be hosting a booth at the 2020 Garden Expo Show this year as a fundraiser.

Our FLA, Chelsea Wunnicke, will be there speaking on "Making the Most of Your Seasonal Produce".

There will be very many unique displays and hopefully the weather will cooperate for our plant sale.

Additional plants/bulbs are welcome
for March 28.

Call Cecile at 608-489-2587



CULTURAL ARTS PREVIEW



2020



This year's theme is "HCE 2020 Vision—Celebrating 80 Years".

The bonus category is "Seeing HCE Through New Eyes". Limit one entry per county. Decorate a pair of glasses. You may use any media to construct your entry. Size restriction—base no larger than 10"x10" with maximum height of 20".

Judging—those attending will vote for their favorite "Seeing HCE Through New Eyes" entry.

Location: Hudson, WI

Date: September 21–23, 2020

More information to come in a separate mailing when it is available.

A Husband's Viewpoint

I've always known that life was full of obstacles and woes
I've learned to live with sickness, death, taxes, and heaven knows
I've taken all these things in stride, the problems and the strife
But one I didn't count on was having an HCE wife.
Come home from work the stove is cold
The dirty clothes still there

The suit I wanted cleaned today, still lying on the chair
"Where's mama, son?" I ask my boy, "This house is a total mess.
Why all our sheets are missing, we've been burglarized I guess.

"No, mama stripped down all the beds, took the sheets away
Some Pygmies in the jungle need bandage kits today."

Why every pair of pants I own is cut in little squares
"I'm demonstrating a lesson on quilts," my better half declares.

I show up at the office in my skivvy shorts and tie
My secretary giggles and the clerks give me the eye.

It's freezing cold, I'm shaking, and my knees are turning blue.
My boss man would have fired me, but his wife is an HCE member too!

I told him what had happened and he said he did believe.

A man sure needs a loving wife to help him when he's ill
To soothe and comfort, mop his brow and help him take his pill
When influenza hits, your life's not worth a dime

If it hits at Conference time.

You'll lie there in an empty house in pain and deep despair
While workshops and reports get all the tender care.

You learn to ask no questions when she waves and drives away
And says she's off to the University for an HCE day.

Stays overnight, then drags back home all bleary-eyed and down
Now who'd believe a lie like that? She must be running 'round!

But I'll get by, I always do, some days are fine some are not
When your wife's an HCE member you must put up with a lot.

I know that when my life is through and when I pass away
They'll have to set the funeral so it's not on meeting day.

And when St. Peter at the gate says "Come to me, my son
I'll check you in the book of life to see how you have done."

He runs his finger down the page and sadly shakes his head.

"Your wife was in HCE for all those years?" he said.

"She didn't cook, sew, make the bed

She spent her time on projects for the HCE instead.

Come right through those pearly gates, there's nothing left to tell,
Your wife is a member of HCE, you've done your time in hell."

~Author Unknown



Empty Prescription Bottle Project



To participate in the project,
please follow the steps listed
below:

1. Empty the prescription bottle.
2. Plastic lids only.
3. Remove labels, no residue.
4. Wash, dry, and replace lid.
5. Place in large Ziploc bag, and mark it "Clean Bottles".
6. Send to:

Mathew 25: Ministries
11060 Kenwood Road
Cincinnati, OH 45242

You're

Invited

To:



Wisconsin Association for
Home & Community Education™

The 2020 Southwest District Spring Meeting of the Wisconsin Association for Home and Community Education

Hosted by:

Richland County Association for Home and Community Education

Date: Wednesday, April 15, 2020

Location: Yuba Community Center, 22100 Main Street, Yuba, WI 54634
(Map on reverse side)

Cost: \$15 per person - (registration deadline is April 1, 2020)

Schedule

9:00-9:30 a.m.	Registration and Refreshments
9:30-10:00 a.m.	Opening Session: Welcome from Richland County Pledge and Creed Roll Call Announcements
10:00-11:00 a.m.	Apron Show
11:00 a.m. - 12:00p.m.	Chelsea Wunnicke – Community Responses to Farmer Stress
12:00 - 12:45 p.m.	Meditation & Lunch: Fried Chicken, mashed potato & gravy, corn, salad, & desserts
12:45 – 1:00 p.m.	Rose Craft
1:00 - 2:15 p.m.	Southwest District Meeting & District Treasurer Report: Shirley Steinhorst
2:15 - 2:30 p.m.	Closing and Depart for Home

HCE Southwest District Spring Meeting - Registration Form

April 15, 2020
Yuba, Wisconsin 54634

Names: _____

Total Number Attending: _____

_____ x \$15 = \$ _____

Make check payable to:

Richland County HCE

Mail registration form and check to:

Cecile Haugh

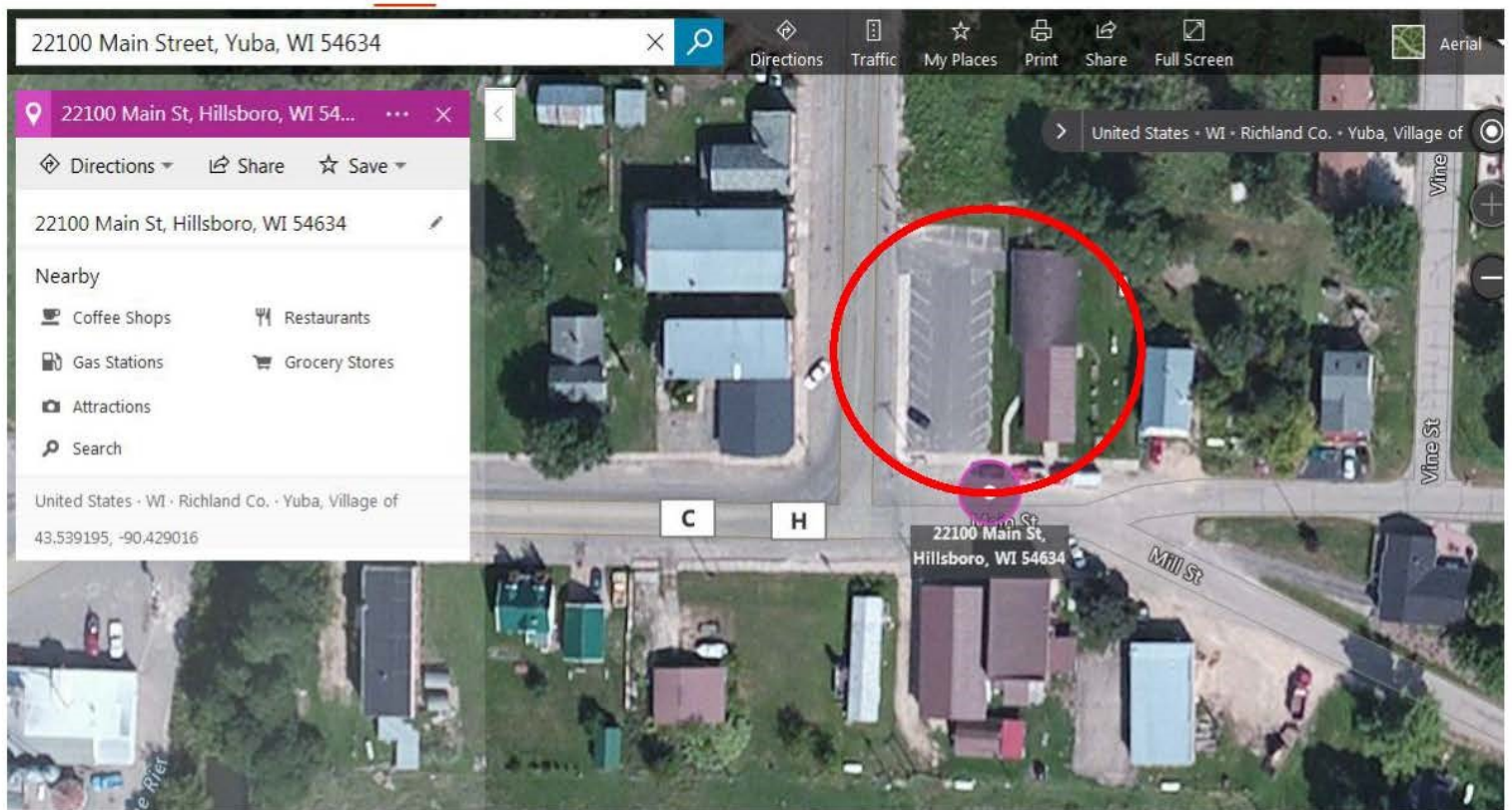
RCHCE Treasurer

S4487 Cty Hwy C

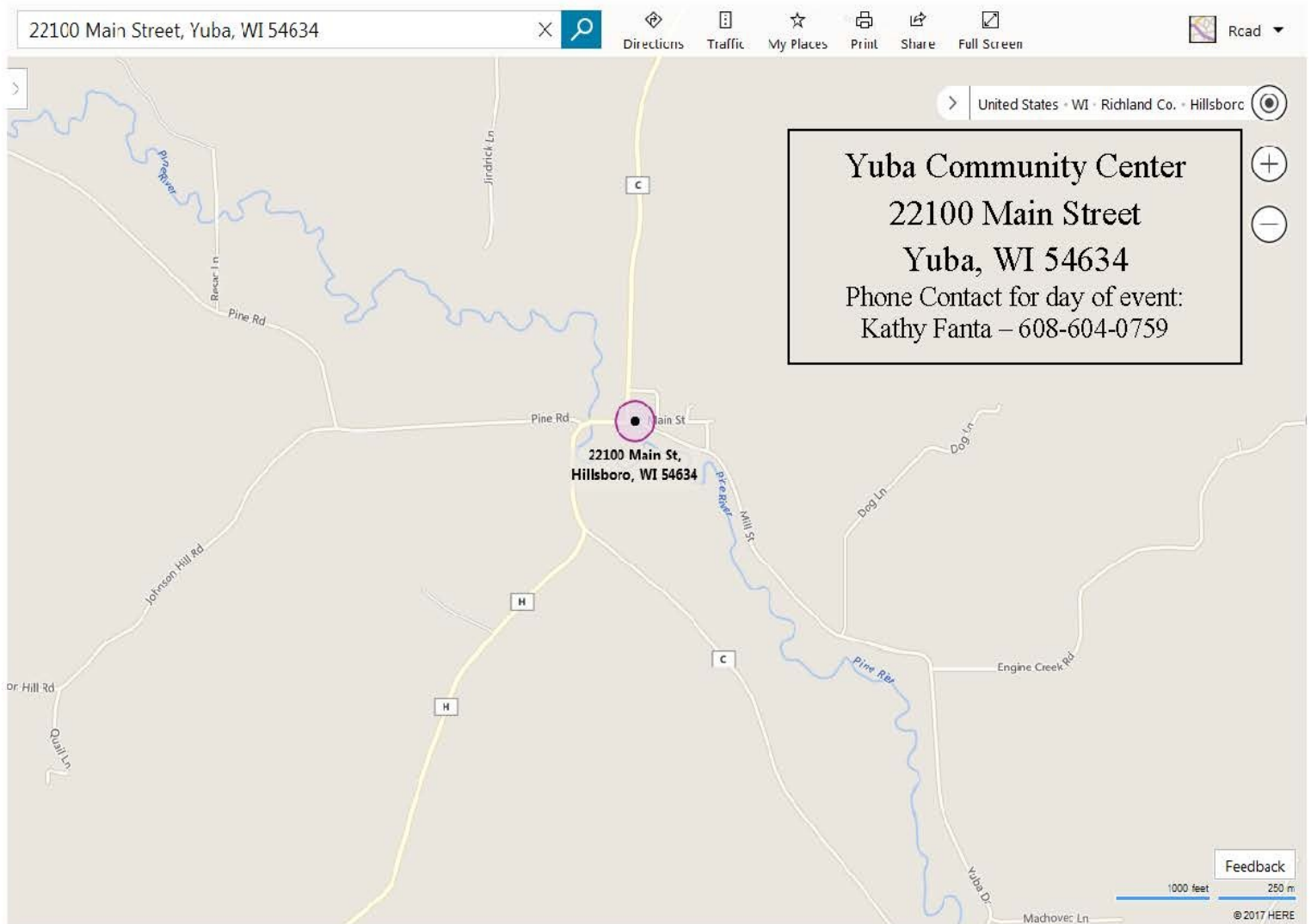
Hillsboro, WI 54634

(Reservations are non-refundable - only transferable)

Registration deadline is: April 1, 2020



Building is located in downtown Yuba, across from the Fire Station. Your GPS may say or use Hillsboro, WI.





Extension
UNIVERSITY OF WISCONSIN-MADISON
RICHLAND COUNTY

Extension Richland County Office
1000 Highway 14 West
Richland Center, WI 53581
Phone: 608-647-6148
Fax: 608-647-9116
Email: chelsea.wunnicke@wisc.edu
<http://richland.extension.wisc.edu>

Division of Extension provides equal
opportunities in employment and
programming, including Title VI, IX, ADA/
Section 504 Rehabilitation Act requirements.

HOMEMAKER HERALD

Spring 2020

Edition

