

Registration due by: Monday, July 22

Send Registrations to: **Richland County Extension Office**
Attn: Beef Producers
1000 Hwy 14 West
Richland Center, WI 53581

For questions or concerns, please contact the Richland County Extension Office (608) 647-6148

Kershner Cattle Co.

Located at:
28986 US Hwy 14 East,
Richland Center, WI 53581



Oakley and Monica met at the Wisconsin State Fair in the mid 90's both showing and fitting beef cattle. In 1996 Oakley bought the remainder of his Dads herd. From there, they continued raising beef cattle along with their five children, Haley (19), Mallory (18), Ty (15) Maggie (12), and Owen (8).

Their beef cow operation consists of multi breeds, focusing on seed stock and the show cattle industry. With extensive Artificial insemination (A.I) and Embryo transfer (E.T) work, they've been fortunate enough to produce, raise and show state & national champions. Kershner Cattle hosts an annual show calf sale in the fall every year. They sell breeding heifers, show steers and bulls.

RICHLAND COUNTY BEEF PRODUCERS

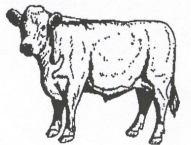
Field Day

Showing Off The Beef

SATURDAY
JULY 27, 2019

Kershner Cattle Company

RICHLAND COUNTY
BEEF PRODUCERS



LW
Extension

Showing Off the Beef

SATURDAY, JULY 27, 2019

4:00 Farm Tour
Kershner Cattle Co.

5:00 Steak Dinner:
*Prepared by the Richland
County Beef Producers*

6:30 Break Outs :
There will be two to three break out sessions.

Door Prizes at the end of the event.



2019 Beef Field Day: Registration Form
Cost \$15 per person (includes dinner and materials)

Name : _____ Phone: _____

Address: _____ City _____

State: _____ Zip: _____ Number Attending: _____ x \$15 = _____

Registration due by Monday, July 22

Total Cost = _____

Make checks payable to: **Richland County Beef Producers**